



Glen Mona Cottage Main Road, Ramsey, Isle Of Man, IM7 1HR  
Asking Price £445,000

- Traditional Manx smallholding in a sought-after village location next to Glen Mona Public House, offering character, history, and significant potential.
- Range of useful outbuildings including a workshop, two stables, piggery, and additional rear outbuilding, ideal for storage, livestock, or equestrian use.
- Elevated rural setting with stunning countryside views over Maughold, yet within walking distance of the village and close to Dhoon School, Ramsey, and Laxey.
- Approximately 5 acres of productive, well-enclosed land in two interconnected fields with flexible grazing, private water supply, and excellent hay yield.
- Charming country cottage approached via a sunken driveway, featuring gable-end chimneys, sash-style windows, and well-proportioned, manageable accommodation.



Deanwood's are delighted to bring to the market Glen Mona Cottage, a traditional Manx smallholding and a rare opportunity not to be missed. Full of character and heritage, it is as Manx as the hills themselves.

Ideal for those seeking the "good life", the property enjoys a village location next to the Glen Mona Public House and offers history, potential, land, and a useful range of outbuildings.

Set in a commanding elevated position, Glen Mona Cottage enjoys spectacular countryside views across Maughold and is well located between Ramsey and Laxey. While standing alone in a rural setting, it remains within walking distance of the village and is close to the highly regarded Dhoon School.

Approached via a charming sunken driveway, the cottage immediately impresses. An archetypal country home, it features gable-end chimneys and sash-style windows. The accommodation is well proportioned and manageable, offering an ideal balance of space.

To the left of the cottage is a range of outbuildings comprising a workshop, two stables, and a piggery, with a further outbuilding to the rear. These are ideal for storage, livestock, or equestrian use.

Surrounding the cottage are two interconnected fields extending to approximately 5 acres. With a central gateway allowing flexible grazing, the land is productive and currently produces excellent hay. The fields benefit from their own water supply via a well-fed spring from the hills behind and are well enclosed by stone walls, fencing, and hedging.

The property benefits from oil-fired central heating, uPVC double glazing, and mains drainage.











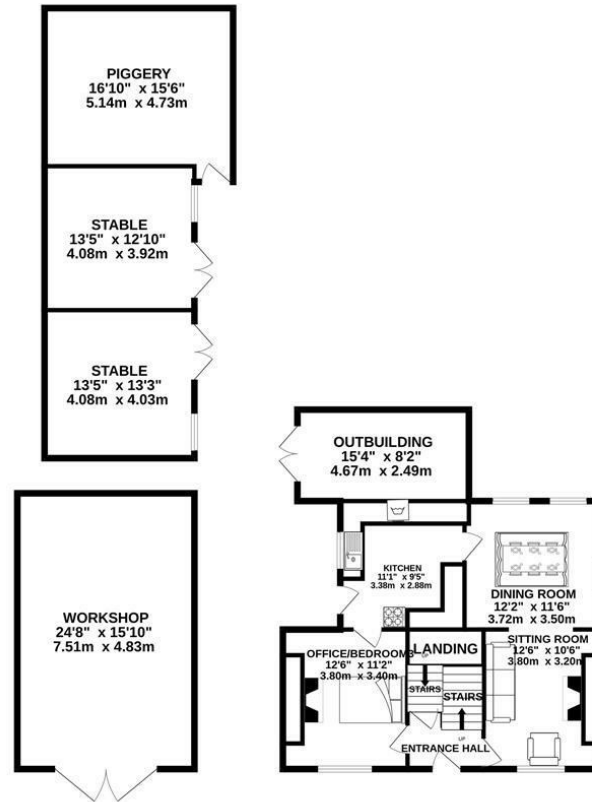


Glen Mona Cottage Main Road, Ramsey, Isle Of Man, IM7 1HR

---



GROUND FLOOR  
1716 sq.ft. (159.4 sq.m.) approx.



1ST FLOOR  
486 sq.ft. (45.2 sq.m.) approx.



TOTAL FLOOR AREA: 2202 sq.ft. (204.6 sq.m.) approx.

Not to scale-for identification purposes only  
Made with Metropix ©2024

**DOUGLAS**

37 VICTORIA STREET  
DOUGLAS  
ISLE OF MAN IM1 2LF

T 01624 620606  
F 01624 677363  
E info@deanwood.co.im

**CASTLETOWN**

COMPTON HOUSE  
9 CASTLE STREET CASTLETOWN  
ISLE OF MAN IM9 1LF

T 01624 825995  
F 01624 825996  
E castletown@deanwood.co.im

**RAMSEY**

LEZAYRE HOUSE  
87 PARLIAMENT STREET  
RAMSEY ISLE OF MAN IM8 1AQ

T 01624 816111  
F 01624 816588  
E ramsey@deanwood.co.im

These particulars are for information purposes only. They do not constitute or form any contract nor should any statement contained herein be relied upon as a representation of fact. Neither the vendor nor DeanWood Agencies Limited ('the firm'), nor any officer or employee of the firm accept liability or responsibility for any statement contained herein. The vendor does not by these particulars, nor does the firm, nor does any officer or any employee of the firm have any authority to make or give any representation or warranty whatsoever as regards the property or otherwise. It is the sole responsibility of any person interested in the property described in these particulars to make all proper enquiries and searches to verify the description of the property and all other particulars herein.

FOR MORE PROPERTIES VISIT OUR WEBSITE @ [deanwood.im](http://deanwood.im)